

INSTALLING YOUR SCHLAGE BE468



PRE-INSTALLATION NOTES

The deadbolt included is preconfigured to fit a standard door frame.

Note your 6 digit programming code located on a sticker on inside of your lock (alarm assembly) before you begin installation. This may be needed for panel pairing if this unit was not purchased as a part of your primary system order.

When tightening any screws, be sure to make sure that no parts move by hand once tightened.

Be sure not to over tighten any screws. This can prevent the deadbolt from moving freely.

Additional installation instructions can be found at:
<https://youtu.be/ZVyzexUnHeA>

REQUIRED TOOLS

Phillips Screwdriver (Included in your package)

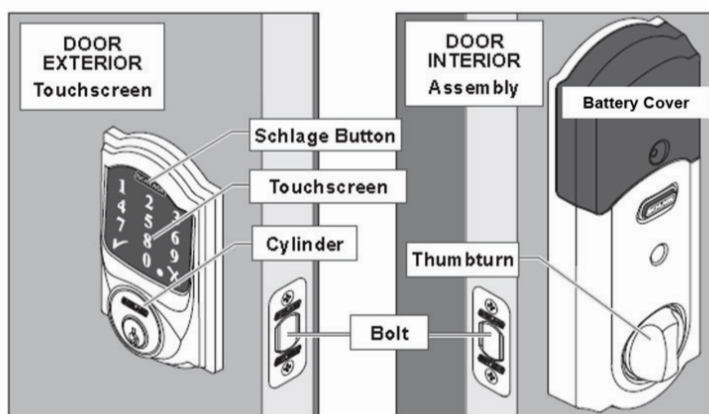
DO NOT use a power drill! A manual or electric screwdriver is safe, but a power drill may damage the lock.

Additional Tools You May Need:

- Tape Measure
- Flathead Screwdriver
- Pencil
- Wood Block
- Hammer



LOCK COMPONENT TERMINOLOGY



- Thumbturn** - Used to lock and unlock manually from the inside.
- Schlage Button** - Located on the outside of the door.
- Touchscreen** - Located on the outside of the door.
- Cylinder** - Used to unlock only in emergency situations.
- Bolt** - Automatically extends and retracts when the touchscreen is used.
- Manually extends and retracts when the thumbturn is rotated.

STEP 1

CHECK THE CURRENT DOOR/FRAME ALIGNMENT

Because the bolt on this lock is extended automatically, it is important that the door and frame are aligned. Use this checklist to determine if your current alignment will work without any adjustment.

I can lock the door without pushing, pulling or lifting the door.

My door alignment— the ability to lock the door easily and smoothly— stays the same with changing seasons.

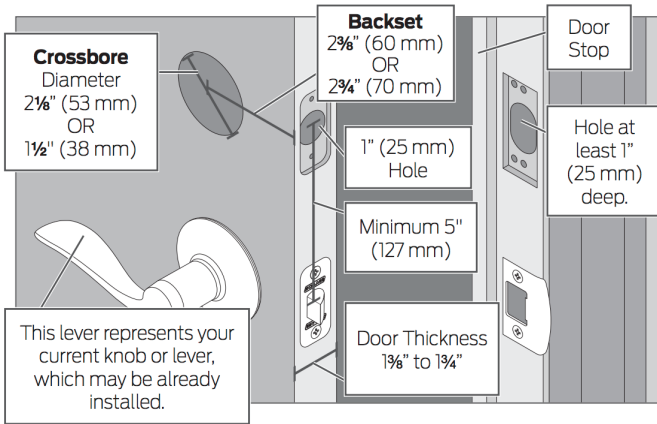
When the door is closed, there is space for the deadbolt to extend 1" into the frame when locked.

If you could not check every box in the checklist, you will need to adjust your door and/or frame. Please visit answers.schlage.com for more information.

STEP 2

CHECK DOOR/FRAME DIMENSIONS

Measure the dimension shown in the image below (standard dimensions). If your door dimensions do not match, you will need to change your door preparation.



If your door is thicker than 1 3/4", you will need a thick door kit. Please call Schlage Customer Service at 1-888-805-9837.

Mark your crossbore and backset measurements on the next page. You will need these measurements for installation. Either measurement example on the next page is normal.

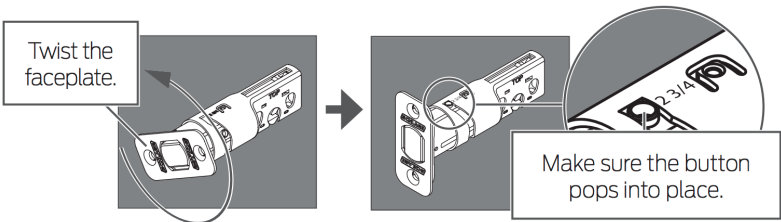
STEP 3

INSTALL BOLT AND STRIKE

3a: Adjust bolt length if necessary.

- ★ **Note:** the bolt is preconfigured to fit the standard door dimensions mentioned in STEP 2. If your door matched the measurements in STEP 2, you do not need to adjust the length.

If the backset (see step 2) of your door was $2\frac{3}{4}$ " (70 mm), you need to adjust your bolt. Twist the faceplate until the button pops into the $2\frac{3}{4}$ " space.

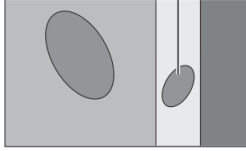


3b: Change the faceplate if necessary.

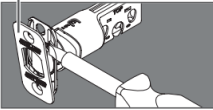
- ★ **Note:** The faceplate is currently preconfigured to fit the standard door frame. If your door matches the measurements in STEP 2, you can move on to step 3c.

No Mortise

If your door looks like this, complete the steps below.



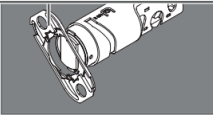
1. Pry the faceplate off.



3. Slide the round faceplate into place.



2. Remove the backplate.



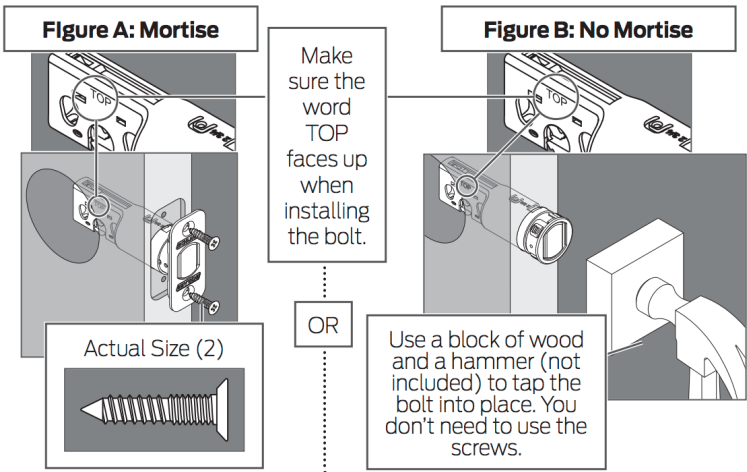
4. Go to Step 3c, **Figure B.**

3c: Install the bolt into the door.

IMPORTANT!

Retract the bolt before continuing to step 3c!

Choose the picture below that matches your door

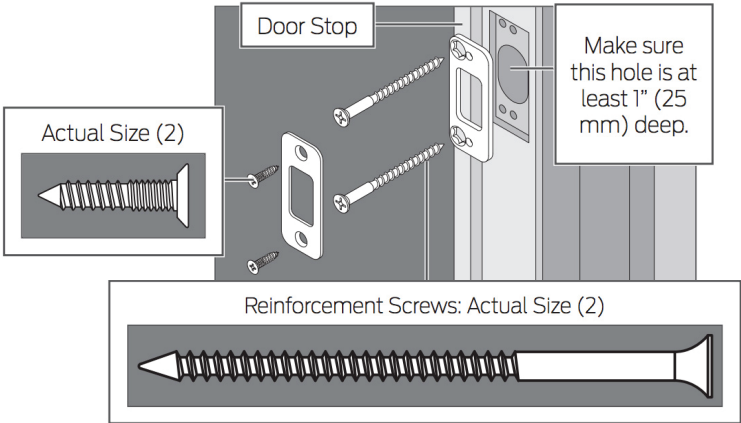


3d: Install the strike into the frame.

★ **Note:** This step is only if you did not complete the Figure A: Mortise install in step 3c.

Install all of the parts shown below for maximum security.

The reinforcement screws may not fit on doors with sidelights.



STEP 4

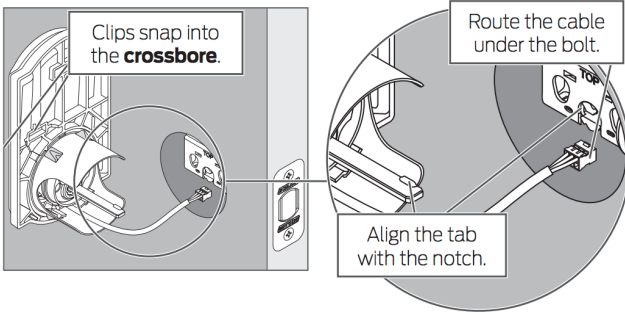
INSTALL THE TOUCHSCREEN ASSEMBLY

4a: Install the Touchscreen on the outside of the door.

- ★ **Note:** if you have a crossbore (see step 2) that is slightly less than 2 1/8" (54 mm), the lock may not install smoothly. You can then remove the spacer to improve fitment. Always remove the space for a 1 1/2" (38 mm) crossbore.

The clips snap into the crossbore (see step 2) to assist in holding the keypad on the door.

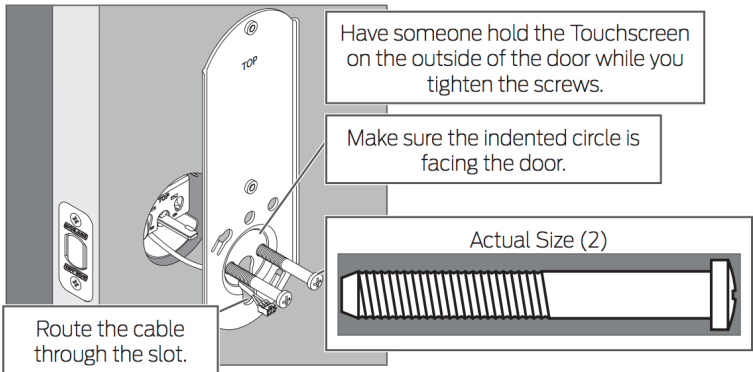
The Touchscreen Assembly should install smoothly. If it does not, check that the bolt is set to the correct backset (see step 2).



4b: Install the Support Plate on the inside of the door.

- ★ **Note:** Make sure that once tightened, the support plate can not move left or right by hand. Be mindful not to over tighten any screws.

Make sure the Touchscreen and Support Plate are straight on the door before tightening the screws. Tighten screws fully to prevent the lock from moving over tighten.



STEP 5

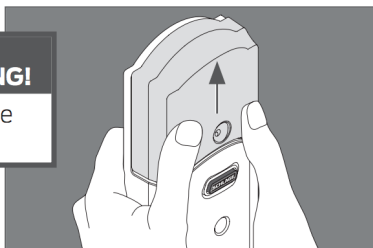
INSTALL THE INSIDE ASSEMBLY

5a: Remove the battery cover from the Inside Assembly.

★ **Note:** Avoid contact with the circuit board due to electrostatic discharge!

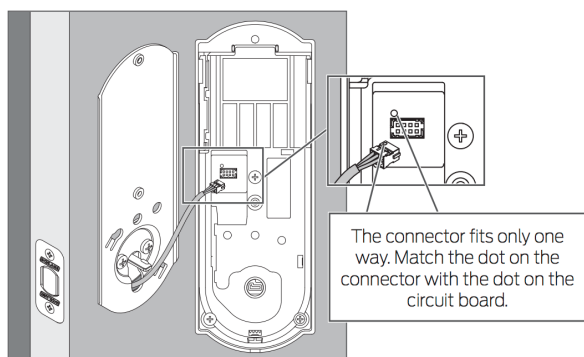
**ELECTROSTATIC
DISCHARGE WARNING!**

Avoid contact with the
circuit board!



5b: Connect the cable to the Inside Assembly.

Locate the screws in step 5d before beginning this step so they will be handy when you need them.

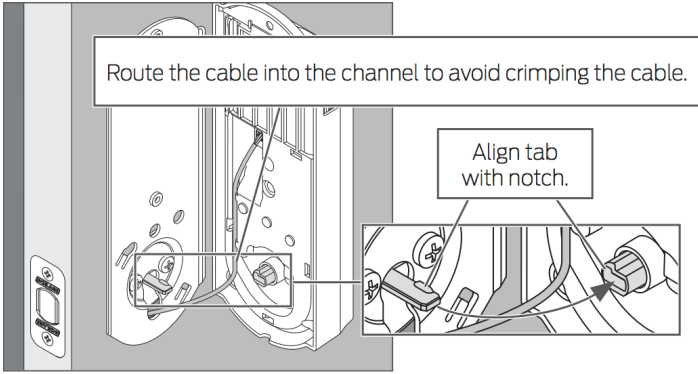


5c: Install the Inside Assembly.

Align the tab with the notch as shown.

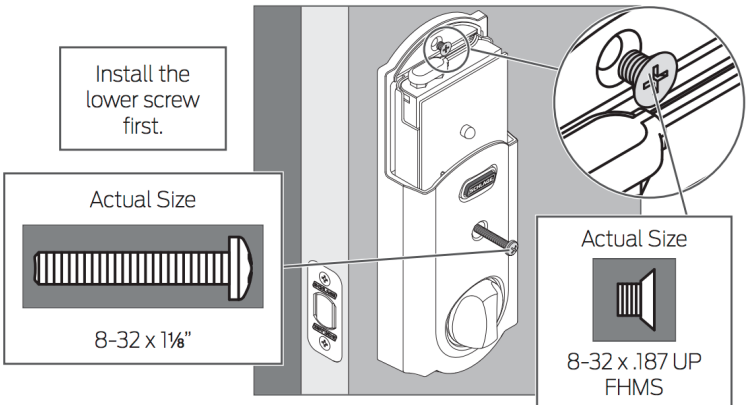
Route the cable into the channel.

Then slide the Inside Assembly towards the door.



5d: Secure the Inside Assembly to the Support Plate.

- ★ **Note:** Do not rotate the thumbturn at this time. It may not rotate easily. Setup will be performed after the installation is complete.

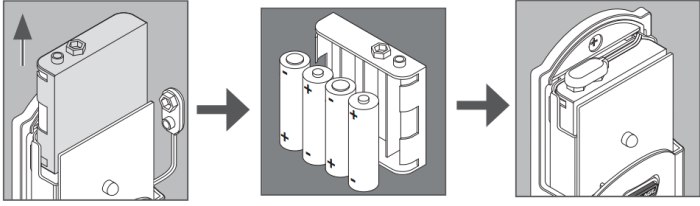


STEP 6

INSTALL THE BATTERIES/ RESET THE LOCK

6a: Install the batteries into the battery tray.

1. Unsnap the connector.
2. Remove the battery tray.
3. Install the four fresh, high-quality alkaline AA batteries that are included in your package.
4. Carefully replace the battery tray, with the batteries facing the door. Do not connect the battery connector at this time.
5. Press and hold the Schlage Button.
6. While holding the Schlage Button, reconnect the batteries.
7. Release the Schlage Button.
8. Snap the connector back into place.

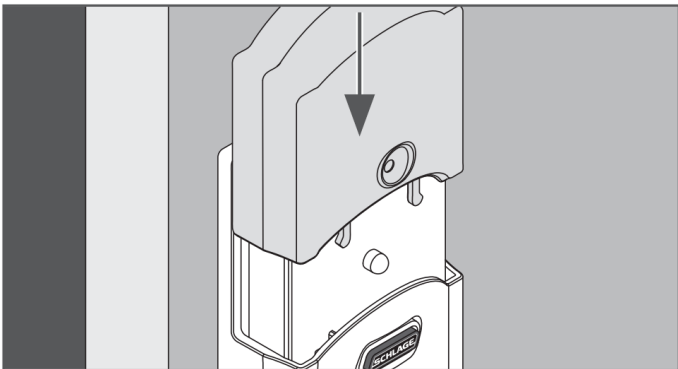


6b: Install the battery cover

Once the battery cover has been installed, door installation is complete.

To complete pairing with your Frontpoint system, refer to your **Smart Lock Code Guide**.

877-602-5276



Contact Customer Support
877-602-5276

